



Next Steps



Negotiate with property owners



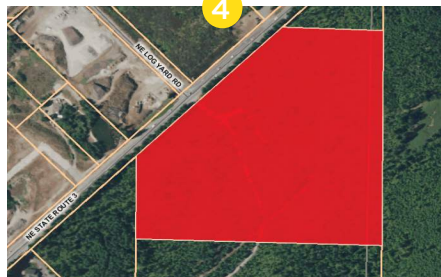
Purchase Land



Design Park and Ride



Construction/Break Ground



For further information, go to:

www.masontransit.org

or contact

Mike Oliver, MTA Park and Ride Project Manager at: moliver@masontransit.org

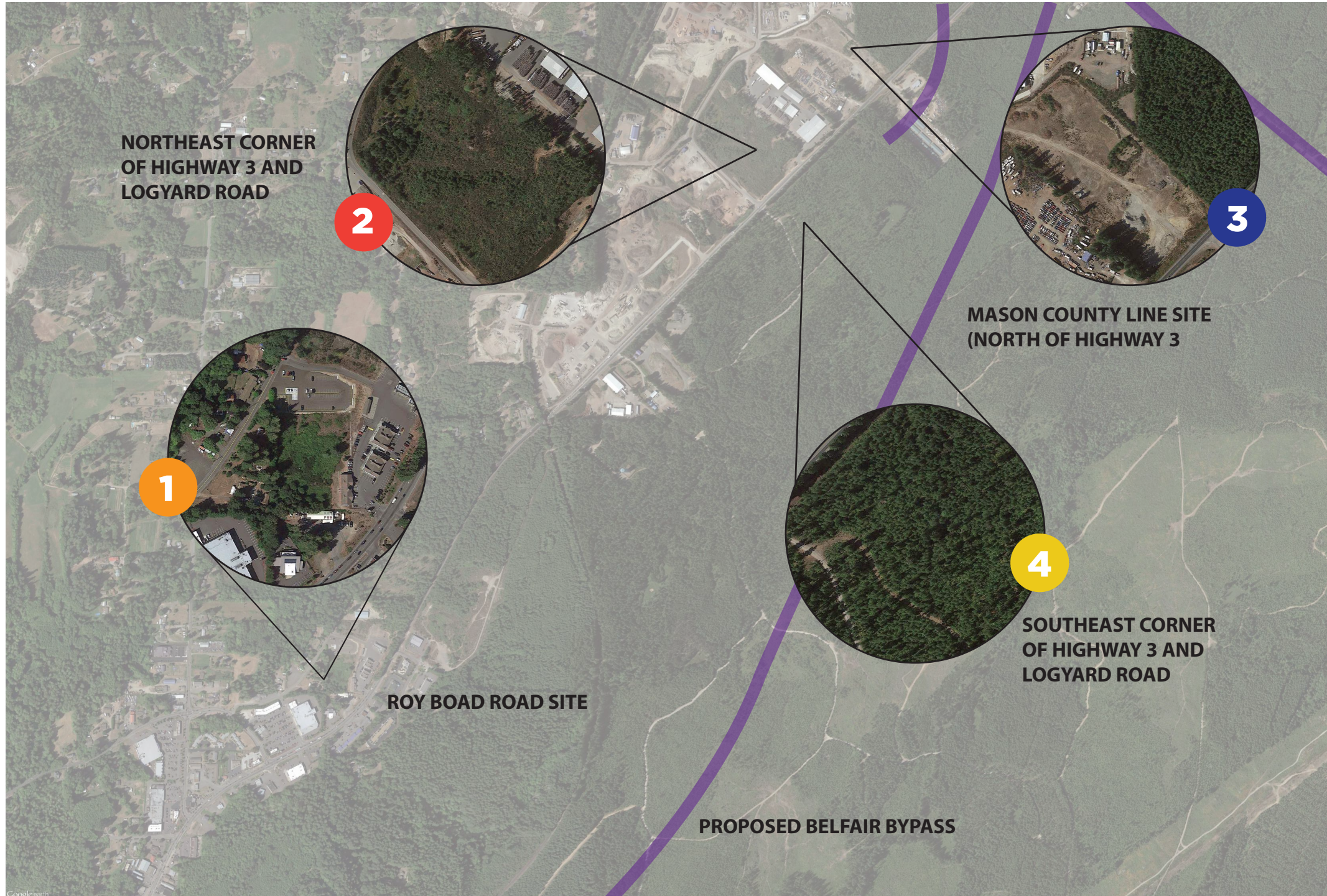
MASON TRANSIT AUTHORITY



Belfair Park & Ride Location & Final Selection



Site Performance



2 Strong Performer

- ◆ Ample space for MTA project goals
- ◆ Direct access to SR 3 and side road
- ◆ Near future bypass connection

4 Strong Performer

- ◆ Ample space for MTA project goals
- ◆ Direct access to SR 3 and side road
- ◆ Near future bypass connection
- ◆ Opportunity for partnerships/cost savings

1 Weak Performer

- ◆ Limited space on site
- ◆ No direct access to SR 3
- ◆ Not near future bypass connection
- ◆ Limited partnership opportunities

3 Weak Performer

- ◆ Limited space on site/parcel configuration
- ◆ Limited partnership opportunities
- ◆ Furthest from downtown

Process

